

00 – Setting up JupyterLab (Conda) on Windows

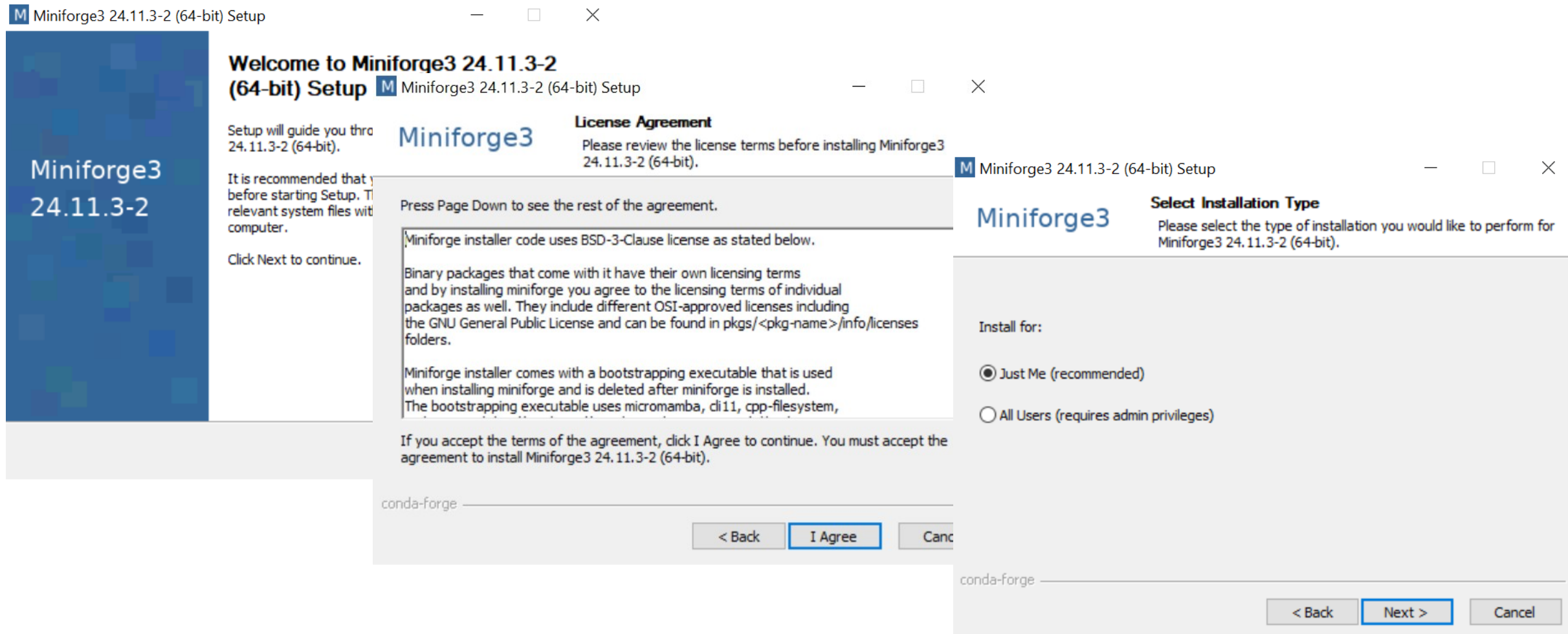
Bálint Aradi

Scientific Programming / Wissenschaftliches Programmieren in Python (2026)

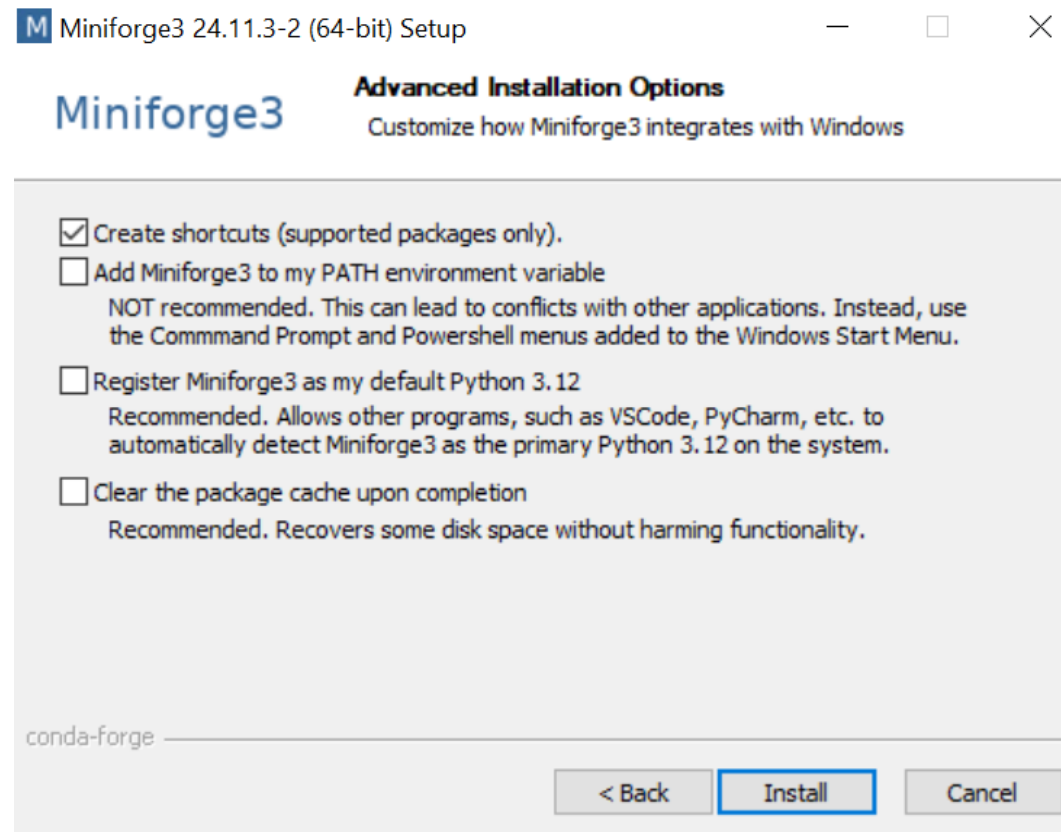
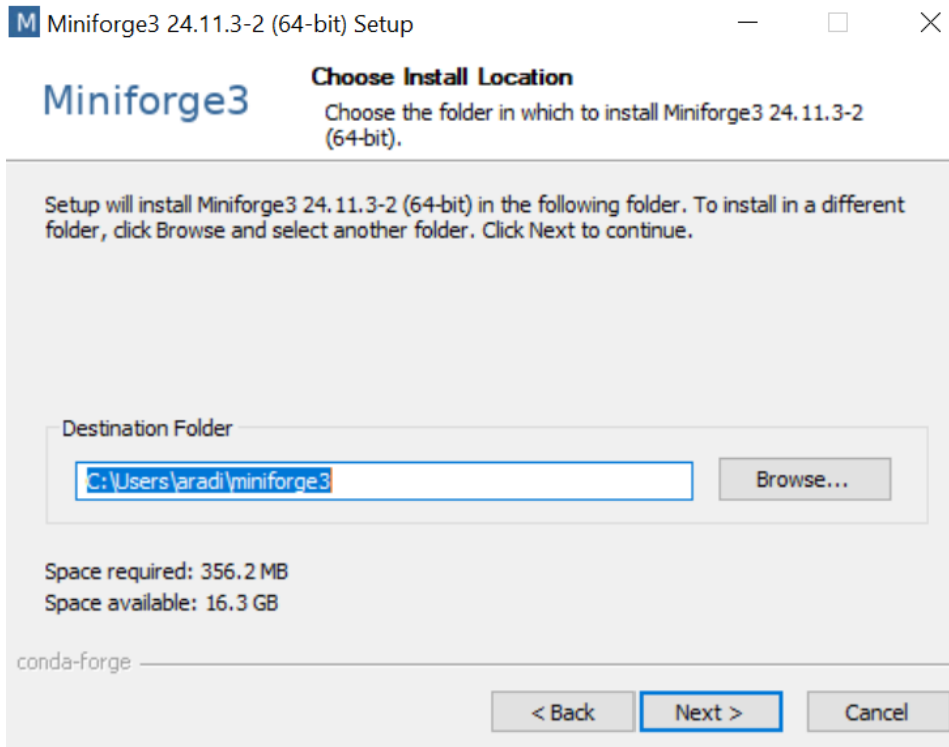
<https://atticlectures.net/scipro/python-2026/>

Install Conda (Miniforge) on Windows

- Download the [latest Miniconda installer \(Miniforge3 Windows 64-bit\)](#)
- Start the downloaded Miniforge installer

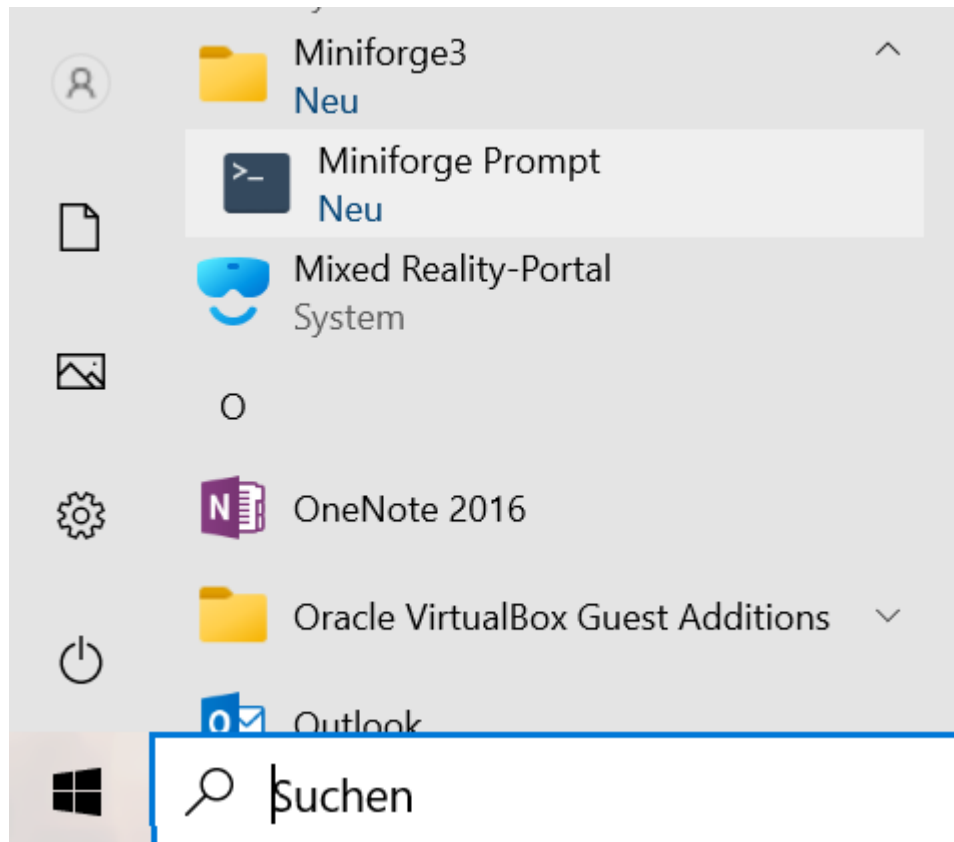


Install Conda (Miniforge) on Windows



Set up Conda working environment

- Start the Miniforge prompt (= command line terminal with initialized Conda environment)



Set up Conda working environment

- Update Conda (in case newer version is available)

```
conda update --all
```

```
(base) C:\Users\aradi>conda update --all
Channels:
- conda-forge
Platform: win-64
Collecting package metadata (repodata.json): /
```

Set up Conda working environment

- Create a special environment for all the course related stuff

```
conda create -n scipro
```

```
(base) C:\Users\aradi>conda create -n scipro
Channels:
- conda-forge
Platform: win-64
Collecting package metadata (repodata.json): done
Solving environment: done

## Package Plan ##

environment location: C:\Users\aradi\miniforge3\envs\scipro

Proceed ([y]/n)?
```

- Activate the **scipro** environment

```
conda activate scipro
```

- We will install all course related programs into this environment.
- Whenever you start the Anaconda prompt, you should activate this environment with the command above in order to access the installed programs.
- You might create further environments to host other software collections for other projects.

Set up Conda working environment

- Install JupyterLab (make sure, you are in the scipro environment!)

```
conda install jupyterlab
```

```
(scipro) C:\Users\aradi>conda install jupyterlab  
Collecting package metadata (current_repodata.json): \
```

Name of the active environment

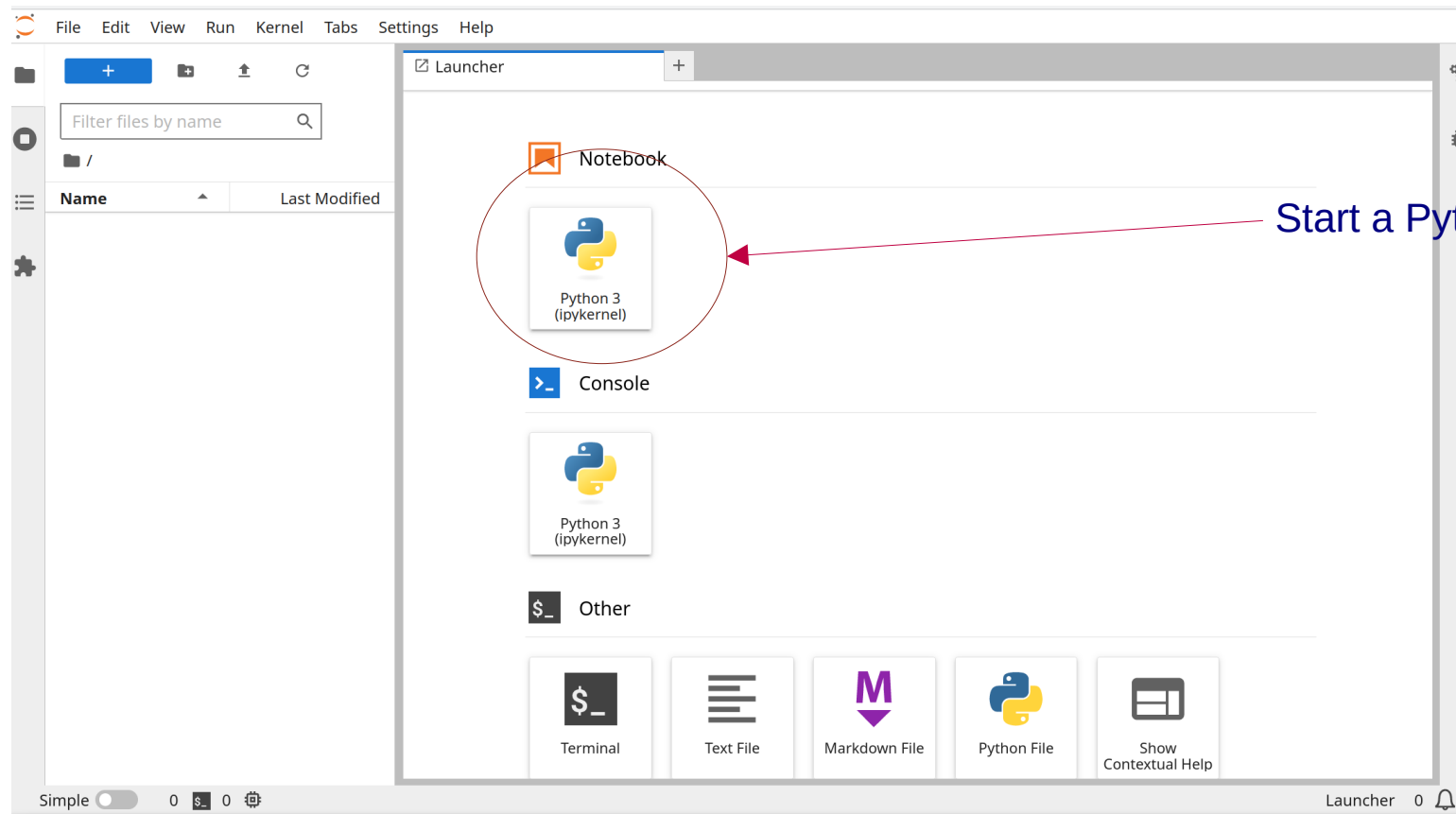
Start JupyterLab

- Start JupyterLab

```
jupyter-lab
```

```
(scipro) C:\Users\aradi>jupyter-lab  
[I 2023-04-10 17:41:08.939 ServerApp] jupyterlab | extension was successfully linked.  
[I 2023-04-10 17:41:08.955 ServerApp] nbclassic | extension was successfully linked.
```

- This should start a browser with JupyterLab



Start a Python 3 notebook

You are ready to use JupyterLab and create Python programs!

Have fun!